



皆仪
AZOVTES®

诸事皆仪

AE8901 多功能风速计

中英文使用说明书



Multifunction anemometer

引言

- 感谢您购买本公司生产的风速仪
- 本手册仅提供本产品的相关测量功能的使用方法以及使用方面的注意事项,要发挥本产品的最佳使用效能,使用前请详阅本手册,并妥善保管本手册以便不时之需。
- 当您收到此产品时请检查仪器是否完好,配件是否齐全,如有缺失或是其它任何问题请您尽快与供应商联系。

目录

- 产品参数----- (01)
- 按键介绍----- (02)
- 产品功能----- (03)
- 测量----- (03-05)
- 风向方位角度显示----- (05)
- 湿球、露点温度显示----- (05)
- 手动/自动关机----- (06)
- 数据存储查询与清除----- (06)
- 与PC联机----- (07-15)
- 常见问题解析----- (16)
- 特殊声明----- (17)

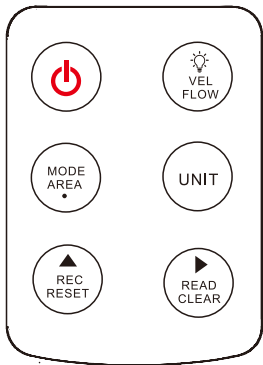
Table of contents


➤ Product parameter-----	(01)
➤ Key explanation-----	(02)
➤ Product Features-----	(03)
➤ Measurement-----	(03-05)
➤ Wind direction, azimuth and angle display-----	(05)
➤ wet bulb and dew point temperature display-----	(05)
➤ Manual automatic shutdown-----	(06)
➤ Data store, query and purge-----	(06)
➤ Connection with PC-----	(07-15)
➤ Common problem analysis-----	(16)
➤ Special disclaimer-----	(17)

产品参数

风速测量范围	0.30~45.0m/s
刷新速率	0.5秒
单位转换	m/s, km/h, ft/min, knots, mph °C/°F
风量范围	CMM:0~999900m ³ /min CFM:0~999900ft ³ /min
风量精度	(0.5+5%)×风口面积
风速方向/角度	有
湿度测量范围	5~99%RH
露点温度	-20°C~60°C
湿球温度	-10°C~60°C
温度测量范围	-10°C~60°C
风速精确度	0.5m/s+5%×指示风速
风温度精确度	±2°C
显示分辨率	0.01m/s 0.1°C
风轮结构	分体风轮
USB数据输出	TYPE-C
USB供电	DC 5V
自动开关机设置	有（10分钟）
存储笔数	999笔
背光控制	有
使用电池	1.5V AAA电池×4
整机重量	250克
工作环境	0~60°C 10~90%RH
使用环境	-10~70°C 10~75%RH

按键介绍



 键：短按开关机

UNIT键：可以切换风速, 风量单位。长按UNIT键可以切换温度的单位。

MODE/AREA/. 键：可以测风速, 风量的最大, 最小值, 平均值。

REC/RESET/▲键：可以存储当前数据，长按 REC/RESET/▲键进行自动开关机设置界面。

READ/CLEAR/▶键：可以读取存储数据，长按 READ/CLEAR/▶键进行存储数据清除界面。

VEL/FLOW/LED键：可以切换风速, 风量测量画面，长按打开背光灯, 并显示背光符号, 再长按一次可关闭此功能。

产品功能

1. 测量风速, 风量, 风向, 温度, 湿度, 风向角度, 风力等级;
2. 数据保持, 存储, 删除功能;
3. 通过USB 与 PC 联机;
4. 背光功能, 自动关机功能, 低电指示功能;
5. 风扇手柄可以拉长到约50cm的长度;

测量

一、测量前准备

1. 将电池门扣开, 按正确极性将电池装入电池仓内, 然后盖上电池门。
2. 将风轮组件插入主机插孔。

二、风速风温的测量




1. 按主机“开机”键开机, 屏幕全显示 1 秒后进入当前风速、风温测量画面, LCD 屏幕显示
 - (1) 按“UNIT”键, 风速单位会在 m/s、km/h、ft/min、knots、mph 之间转换。(默认为 m/s);
 - (2) 按“UNIT”键 3 秒, 温度单位会在℃、F 之间转换, 默认为℃。
2. 手持风速计, 按风轮上箭头指示, 将风轮对准出风口,
3. 保持传感器与风向垂直, LCD 屏幕显示当前所测风速值及风温值。
 - (1) 等大约 2 秒钟使数据稳定。
 - (2) 想取得更为准确数据, 可尝试保持风叶与风向在一条直线, 且风叶在风口的中心位置。

- (3)需LCD背光时, 长按 3 秒背光键即打开背光功能, LCD 上出现背光符号. 表示背光功能开启. 长按 3 秒背光键LCD背光熄灭, 背光符号消失, 背光功能关闭。

三、风温和空气温度测量:

1. 当测量风速时, 风温同时会测量出来.
2. 选择温度单位可长按 UNIT 键. 注意:
 - (1)若当前为风量测量模式(LCD 显示 FLOW), 此时可按“VEL/FLOW”键转到风速测量模式, 反之亦然。
 - (2)开机默认为风速测量模式“VEL”。

四、风量的测量

1. 按“VEL/FLOW”键转到“FLOW”状态模式,
2. 选好您需要的风量及面积单位:
 - (1)按“UNIT”键, 风量单位会在 CMM、CFM 之间转换, 默认为 CMM, 同时面积单位会在 M2、FT2 之间转换, 默认为 M2。
 - (2)面积单位 M2、FT2 随着风量单位的转换而转换: 当风量单位为 CMM 时, 面积单位为: M2; 当风量单位为 CFM 时, 面积单位则为: FT2。
 - a. 长按“AREA”键 3 秒, LCD 上方 4 个数字会改变为 1 个, 此时可输入风口面积, 先按“▲”键使最左边一位为 1, 然后按“.”小数点键, 再按“ 移位键使LCD显示“1.0”, 再按“▲”键使“0”变为“2”然后再按“ 移位键两次, 使LCD显示“1.20”, 最后按“ 移位键确认,
 - 注: 每位数均可在 0~9 间循环切换 (按“▲”键)
 - b. 将传感器对准出风口, 即可测量当前风量值。
 - c. 风量计算公式: $FLOW = VELOCITY * (FREE AREA)$ 测量风速: 风量时LCD 上方条形码会随风速, 风量增大而逐级增加。

注: a. 若未输入风口面积则不能测量风量值!

- b. 当风量大于 9999 时 LCD 将显示 $\times 10$ 或 $\times 100$, 此时测量值为 LCD 显示读数 $\times 10$ 或 $\times 100$ 。

五、最大最小值平均值测量

在风量、风速测量过程中，按“MODE”键可测风量、风速的最大、最小、平均值、HOLD，再按“MODE”键可退出。

例如：

- (1)测风速最大值时，LCD 屏幕上方显示“MAX”字样，
- (2)测风速最小值时，LCD 屏幕上方显示“MIN”字样，
- (3)测风速平均时，LCD 屏幕上方显示“AVG”字样，
- (4)数据保持时，LCD 屏幕上方显示“HOLD”字样，

注意:风量最大/最小值测量操作与风速一样。

风向方位角度显示

在测量模式下，同时按住MODE/AREA/.键和UNIT键，此时湿度显示区域会切换成风向方位和风向角度显示，显示的数据即为被测区域的风向方位和角度，再次短按MODE/AREA/.键和UNIT键可切换回湿度显示模式。

湿球、露点温度显示

在测量模式下，同时短按VEL/FLOW/LED键和UNIT键，温度会在风温、湿球温度、露点温度之间切换，当LCD温度显示区域显示BULB字符时，表示此时测量的为湿球温度，显示DPT字符时，表示此时测量的为露点温度。

手动/自动关机

在测量模式，长按“REC/RESET/▲”按键持续3秒不放，进入AP0 ON/OFF设置界面，此时LCD AP0常亮显示，短按ON/OFF按键进行ON与OFF的选择；

- (1)启用定时自动关机：显示AP0 ON+ 时钟符号显示，此时开机后无任何操作10分钟后自动关机
- (2)取消定时自动关机：显示AP0 OFF + 无时钟符号显示

数据存储查询与清除

一、数据存储

在任意状态下，按下“REC”键，产品便开始存储数据，再按一次“REC”键则停止存储数据。

- (1)连续记录数据设置:在风速测量状态，长按“AREA”键3秒屏幕显示0m/s.按“▲”使“0”变成“1”按“▶”键退出即可。
- (2)单次记录数据:与上述操作类似，只要将“1”改为“0”按“▶”键退出即可。

二、读取记录值

按“READ”键，可读出从序号1到记录的笔数数据，按▲切换至下一个记录数据。按“READ”键时LCD会先显示序号再显示记录值。

长按“RESET”键3秒可退出，返回到正常测量模式。

三、清除记录值

长按“CLEAR”键5秒钟屏幕显示“CLA”后，可清除所有的记录值。注意：

- (1)记录完必须按“REC”键结束记录,否则记录无效!
- (2)本机最大可存储999组数据。

与PC联机

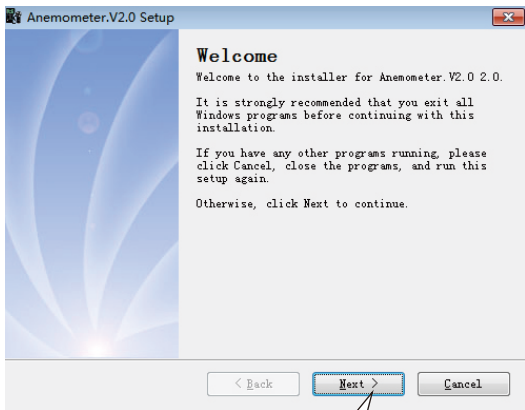
1). 电脑配置需求:

①USB接口

②操作系统: Windows XP/Windows 7/
Windows 8/Windows 10

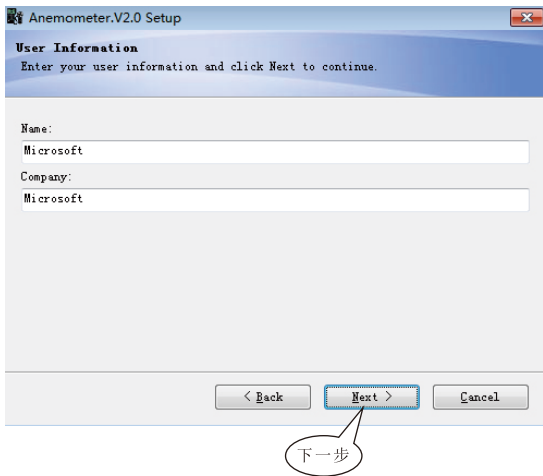
2). 安装风速计数据采集软件:

- 第一步: 联系客服获取软件下载链接
- 第二步: 复制对应的产品下载链接和提取码, 点击下载到电脑上, 找到电脑软件安装程序, 双击“Anemometer.exe”程序图标, 进入程序安装界面, 点击下一步:

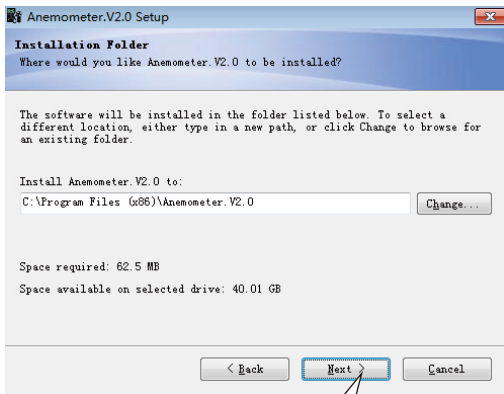


下一步

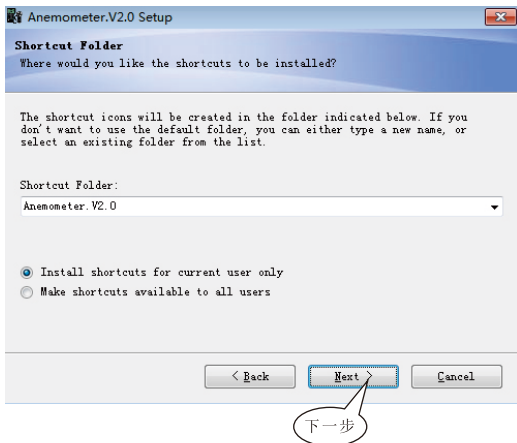
➤ 填写用户名和单位，可直接跳过，点击下一步(如图2)



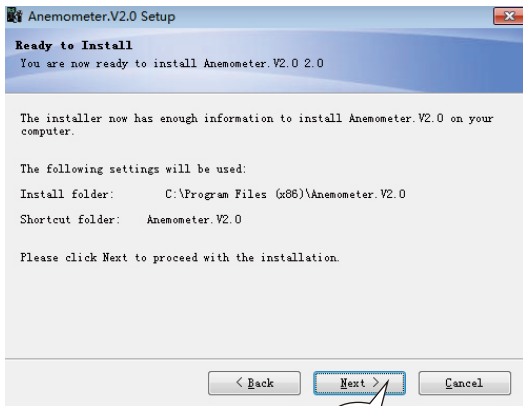
➤ 选择安装路径，默认位置在C盘，点击更改可以更换软件的安装位置，用户可以选择自己喜欢的安装路径。选好路径后点击确定即可，回到安装界面后，点击下一步(如图3)。



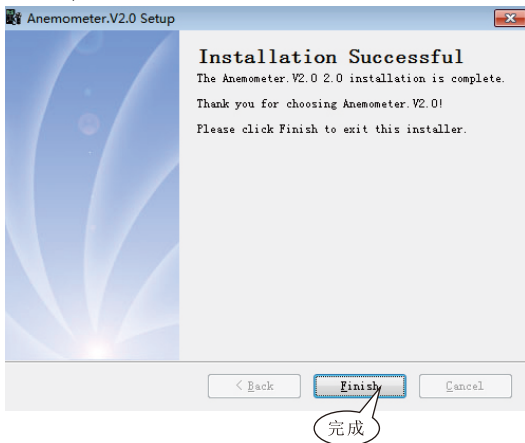
- 选择软件配置只对此用户有效，或者对全体用户有效。可根据用户习惯进行选择，然后点击下一步。



➤ 点击下一步开始安装



➤ 点击完成，安装就完成了。



3). 软件说明

启动用户桌面的快捷方式，（也可通过“开始--启动菜单，路径为：开始\程序\Smart Sensor\Amemometer\Anemometer），软件界面说明，如图5：

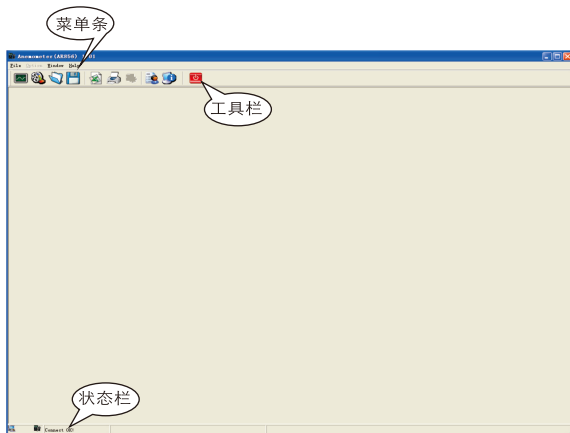


图5

► 各菜单说明，如图6：

File菜单条：

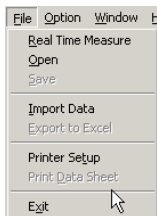


图6



注意：

在状态栏中显示本产品是否已同电脑正确连接：

Connect Ok: 连接成功；

Disconnect: 未连接成功

命令	命令 功能
Real Time Measure	实时数据测量，测量数据将会实时显示在电脑屏幕上
Open	打开以 abin 格式存储的测量数据文件
Save	保存实时测量数据
Import Data	将本机已保存的测量数据下载到电脑
Export To Excel	将测量数据导出为Excel文件
Printer Setup	打印机设置
Print Data Sheet	打印数据表

➤ 工具栏说明如下图所示：



按钮	功能
	实时数据测量，测量数据将会实时显示在电脑屏幕上
	将本机中的保存的测量数据下载到电脑
	打开以 abin 格式存储的测量数据文件
	保存实时测量数据
	将测量数据另存为Excel文件
	打印数据记录
	系统设置
	帮助
	系统信息
	关闭本软件

- 4). 将USB传输线的一端插入风速计主机顶部USB接口处，如图7：

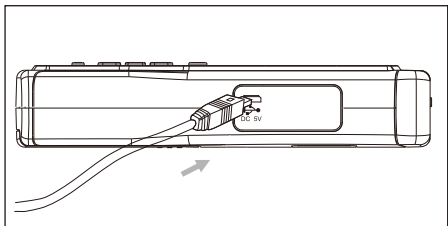


图7

- 5). 将USB传输线的另一端插入电脑主机背后之空闲连接接口，如图8：

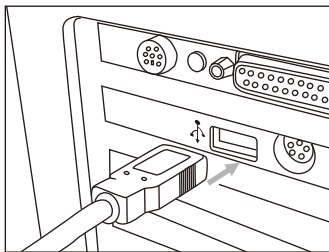


图8

- 6). 实时在线测量：

- 点击“File”菜单下的“Real Time Measure”或工具栏上的“Real Time Measure”按钮，进入实时测量模式；再点击“Start to Measure”按钮，开始测量并记录数据，如图：9

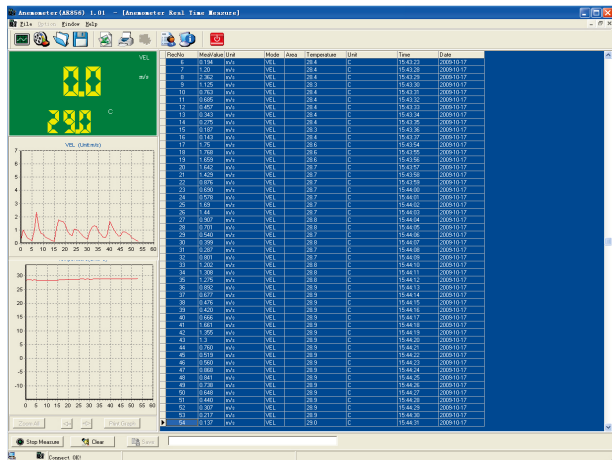


图9

按钮说明:

按钮	功能
	点击开始实时测量
	点击停止实时测量
	点击清空实时测量数据
	点击存储实时测量数据，在弹出窗口中输入文件名，点击保存即可；也可点击FILE/SAVE命令。（文件格式为abin）
Reset zoom	点击显示全部风速、风温曲线
	点击左移风速、风温曲线
	点击右移风速、风温曲线
Print Graph	点击打印风速、风温曲线

7) 测量数据的下载:

点击“File”菜单下的“Import Data”或工具栏上的“Import Data”按钮,进入测量数据下载界面,点击下方“Import”按钮,将本仪器主机已存数据导入电脑,界面如图10:

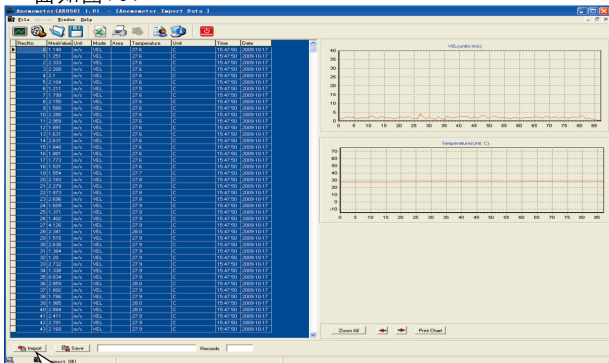

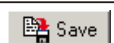




图10

► 按钮说明:

按钮	功能
	点击此按钮,将从本机中下载测量数据。下载过程中,请勿切换画面,以免出现“OverTime”超时错误。
	点击存储下载的测量数据,在弹出窗口中输入文件名,点击保存即可。(文件格式为abin)
Reset zoom	点击显示全部风速、风温曲线
	点击左移风速、风温曲线
	点击右移风速、风温曲线
Print Chart	点击打印测量数据曲线

► 通过本软件还可以打印测量数据、风速/风量曲线,及导出Excel数据文件,请查看“Help”帮助文件。

使用常见问题

以下是一般情况下如果仪器不能正常工作时采取的措施：

1. 屏幕空白：

检查电池是否正确装入。打开仪器背面底部的电池门，电池“+”“-”符号必须与仪器电池仓内所标识的“+”“-”符号相对应。

2. 当本机不能正常连接PC时，请检查USB连接线是否OK，若连接线已不能正常使用，则请更换连接线。

3. 当本机不能正确读取风速数据时，请检查风叶是否被连接。

4. 当本机不能正确读取温度数据时，请检查风叶是否被连接。

5. 当本机出现读数不准确时，请看一下您是否在规定温湿度条件下进行操作。



注意：

在未与PC联机状态下，开机后无任何操作，则10 分钟后自动关机。

特殊声明

1:旧电池必须按照地方法律和规则来处理。

2:本公司保留对本产品设计规格及说明书内容的更新,修改权利,若有变更恕不另行通知!

保修事项

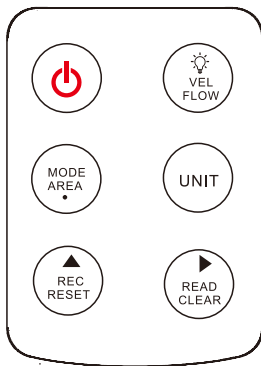
1.本产品自购买日起,在正常使用未经拆装,维修或第三方因素的损坏下一年内享受保修服务,在任何正常情况下均提供维修。

2.上述保修条款只对主机有效,探头配件等耗材不在保修范围内。

Product parameters

Wind speed measurement range	0.30-45.00m/s
Refresh rate	0.5 seconds
unit conversion	m/s, km/h, ft/min, knots, mph °C/°F
Air volume range	CMM: 0~999900m ³ /min CFM: 0~999900ft ³ /min
Air volume accuracy	(0.5+5%)*Tuyere area
Wind speed direction/angle	Yes
Humidity measurement range	5-99%RH
Dew point temperature	-20~60 °C
wet bulb temperature	-10~60 °C
Temperature measurement range	-10~60°C
Wind Speed Accuracy	0.5m/s+5%×indicated wind speed
Wind Temperature Accuracy	±2°C
Display resolution	0.01m/s 0.1°C
Wind wheel structure	Split Wind Wheel
USB data transfer	TYPE-C
USB Power Supply	DC 5V
Automatic switch machine setting	Yes (10minutes)
Storage number	999
backlight control	Yes
Battery	(1.5V)AAA*4
Total Weight	250 grams
working environment	0-60°C 10-90%RH
storage environment	-10-70°C 10-75%RH

Button explanation



 key : Short press to switch the unit on and off

UNIT key : Press to choose the unit of wind speed and air volume,
long press the UNIT button to choose the unit of temperature.

MODE/AREA/.key : Press to measure the maximum and
minimum values of wind speed and air volume.

REC/RESET/▲ key : To store the current data , long press the
REC/RESET/▲ key to enter the automatic switch machine
setting interface.

READ/CLEAR/◀key : To read stored data, long press READ
/CLEAR/◀key, to enter the stored data clear interface.

VEL/FLOW/LED key : To switch the wind speed and air flow
measurement screen, long press to turn on the backlight, and
display the backlight symbol, and long press again to turn off
this function.

Product Features

1. Measure wind speed and volume, wind direction, temperature, humidity, wind direction angle and wind force level;
2. Data retention, storage and deletion functions;
3. Connect to PC via USB;
4. Backlight function, automatic shutdown function, low battery indication function;
5. The fan handle can be stretched to a length of about 50cm;

Measurement

1. Preparation before measurement

- (1) Open the battery door, put the battery into the battery compartment according to the correct polarity, then close the battery door.
- (2) Insert the wind wheel assembly into the socket of the host.

2. Measurement of wind speed and temperature

- (1) Press the "Power On" key of the main unit to turn on the machine, and the screen will be fully displayed for 1 second before entering the current wind speed, wind speed and wind speed, temperature measurement screen, LCD screen display
 - ① Press the "UNIT" key, the wind speed unit will be in m/s, km/h, ft/min, knots, mph to convert between. (The default is m/s)
 - ② Press the "UNIT" key for 3 seconds, the temperature unit will switch between °C and °F, the default is °C
- (2) Hold the anemometer, press the arrow on the wind wheel to point the wind wheel at the air outlet.
- (3) Keep the sensor perpendicular to the wind direction, and the LCD screen will display the current measured wind speed and wind temperature.

- ①Wait about 2 seconds for the data to stabilize.
 - ②To obtain more accurate data, try to keep the wind blade and the wind direction in a straight line, and the wind blade is at the center of the tuyere.
 - ③When the LCD backlight is required, press and hold the backlight key for 3 seconds to turn on the backlight function, and the backlight symbol appears on the LCD, indicating that the backlight function is on. Press and hold the backlight key for 3 seconds to turn off the LCD backlight, the backlight symbol disappears, and the backlight function is turned off.
3. Air temperature and air temperature measurement
- (1)When measuring the wind speed, the wind temperature will be measured at the same time,
 - (2)To select the temperature unit, press and hold the UNIT key.
- ①When in wind volume measurement mode (LCD displays "FLOW"), to press the "VEL/FLOW" button to switch to wind speed measurement mode, and vice versa
 - ②The default is the wind speed measurement mode "VEL" after booting.
4. Measurement of air volume
- (1)Press the "VEL/FLOW" key to switch to the "FLOW" state mode,
 - (2)Select the air volume and area unit, then
- ①Press the "UNIT" key, the air volume unit will switch between CMM and CFM, the default is CMM, and the area unit will be converted between M2 and FT2 at the same time, the default is M2.
 - ②The area unit M2 and FT2 will be converted with the conversion of the air volume unit : when the air volume unit is CMM, the area unit is: M2; when the air volume unit is CFM, the area unit is FT2
- a.Press and hold the "AREA" key for 3 seconds, and the 4 numbers above the LCD will change to 1. At this time, you can enter the area of the air outlet. Firstly, press the "▲" key to make the

leftmost digit be 1, and then Press "." decimal point, and then press the "▶" shift key to make the LCD display "1.0", then press the "▲" key to change "0" to "2" and then press the "▶" key twice to make the LCD displays "1.20", and finally press the "▶" key to confirm.

Note: each digit can be switched between 0 and 9 (press the "▲" key)

b. Point the sensor at the air outlet to measure the current air volume value.


c. Air volume calculation formula: $FLOW = VELOCITY * (FREE\ AREA)$

Measuring wind speed: When the air volume is high, the barcode above the LCD will increase step by step with the wind speed and air volume.

Note:

a. If the air outlet area is not input, the air volume value cannot be measured.

b. When the air volume is greater than 9999, the LCD will display x10 or x100, the value is LCD display reading x10 or x100.

5. Measurement of the maximum, minimum, and average values 

In the process of air volume and wind speed measurement, press the "MODE" key to measure the maximum, minimum, average value, and HOLD of the air volume and wind speed, and then press the "MODE" key to exit. E.g:

- (1) When measuring the maximum wind speed, the word "MAX" will be displayed on the top of the LCD screen,
- (2) When measuring the minimum value of wind speed, the word "MIN" will be displayed on the top of the LCD screen,
- (3) When measuring the average wind speed, the word "AVG" will be displayed on the top of the LCD screen,
- (4) When the data is being held, the word "HOLD" will be displayed on the top of the LCD screen,

Note:The operation of measuring the maximum/minimum value of air volume is the same as that of wind speed.

Display of wind direction, azimuth and angle

In the measurement mode, press and hold the MODE/AREA/ key and the UNIT key at the same time. At this time, the humidity display area will switch to the display of wind direction, azimuth and wind direction angle. The displayed data is the wind direction, azimuth and angle of the measured area, and short press MODE /AREA/ key and UNIT key again can switch back to the humidity display mode.

Wet bulb and dew point temperature display

In the measurement mode, short press the VEL/FLOW/LED key and the UNIT key at the same time, the temperature will switch between wind temperature, wet bulb temperature, and dew point temperature. When the LCD temperature display area displays the BULB character, it means that the current measurement is Wet bulb temperature, when the DPT character is displayed, it means the dew point temperature is being measured at this time.

Manual/automatic shutdown

In the measurement mode, press and hold the "REC/RESET/▲" button for 3 seconds to enter the APO ON/OFF setting interface. At this time, LCD APO is always on, and short press the ON/OFF button to select ON and OFF;

(1) Enable timing automatic shutdown: display APO ON + clock symbol display, at this time, it will automatically shut down after 10 minutes without any operation after startup

- (2) Cancel the timer automatic shutdown: display APO OFF + no clock symbol display

Datastore query and purge

1. Data storage

In any state, press the "REC" button, the product will start to store data, and press the "REC" button again to stop storing data.

- (1) Continuous record data is set in the wind speed measurement state, press and hold the "AREA" button for 3 seconds and the screen will display 0m/s. Press "▲" to change "0" to "1"
- (2) Single record data: similar to the above operation, just change "1" to "0" and press "⏏" key to exit.

2. Read the record value

Press the "READ" key to read out the number of data from serial number 1 to the record, press "▲" to switch to the next record data, when the "READ" key is pressed, the LCD will first display the serial number and then the record recorded value.

Press and hold the "RESET" button for 3 seconds to exit and return to the normal measurement mode.

3. Clear the record value

Press and hold the "CLEAR" button for 5 seconds, and after the screen displays "CLA", all records can be cleared.

Notice:

- (1) After recording, you must press the "REC" button to end the recording, otherwise the recording will be invalid!
- (2) The machine can store up to 999 sets of data.

Connect with PC

(1) Computer configuration requirements:

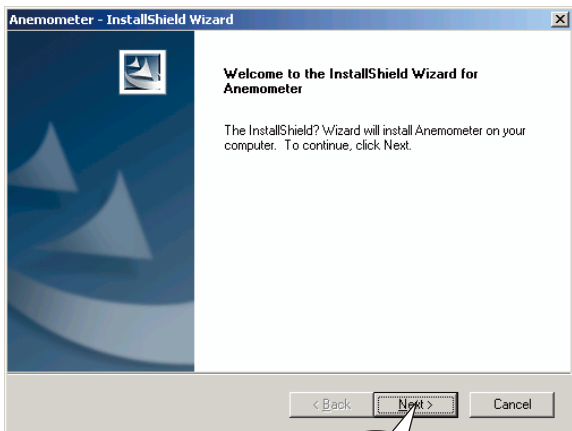
> USB interface

> Operating system: Windows XP/Windows 7/Windows 8/
Windows 10

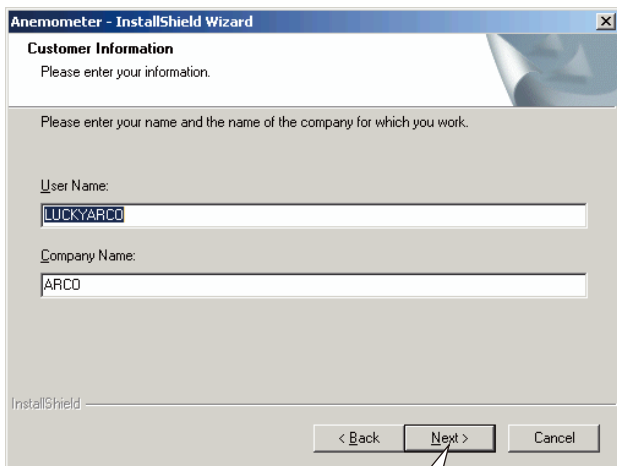
(2) Install the anemometer data acquisition software:

> Step 1: Contact customer service to obtain the software
download link

> Step 2: Copy the corresponding product download link and
extraction code, click to download to the computer, find
the computer software installation program, double-click
the "Anemometer.exe" program icon to enter the
program installation interface, click "Next>"



- Fill in the user name and unit, you can skip it directly, and click Next (as shown in Figure 2)



The screenshot shows a Windows-style dialog box titled "Anemometer - InstallShield Wizard". The main heading is "Customer Information" with the instruction "Please enter your information." Below this, a sub-instruction says "Please enter your name and the name of the company for which you work." There are two text input fields: the first is labeled "User Name:" and contains the text "LUCKYARCO"; the second is labeled "Company Name:" and contains the text "ARCO". At the bottom of the window, there are three buttons: "< Back", "Next >", and "Cancel". A speech bubble with the word "Next" inside points to the "Next >" button.

Figure 2

- Select the installation path, the default location is the C drive, click Change to change the installation location of the software, users can choose their favorite installation path. After selecting the path, click OK. After returning to the installation interface, click Next (as shown in Figure 3).

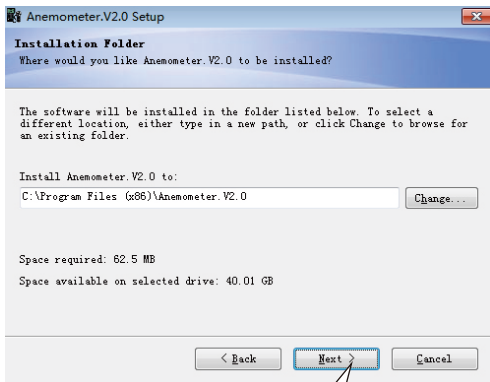


Figure 3

To select software configuration below “valid only for this user”, or “valid for all users” You can choose according to user habits, and then click Next.

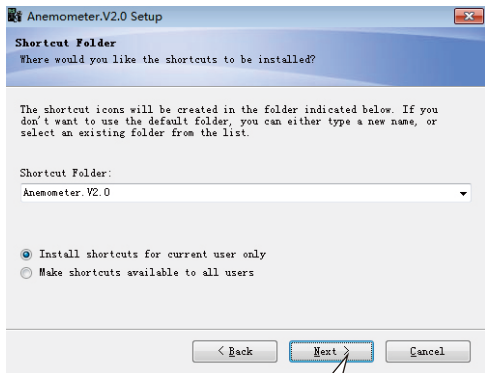


Figure 4

➤ Press “Next” to start Set Up

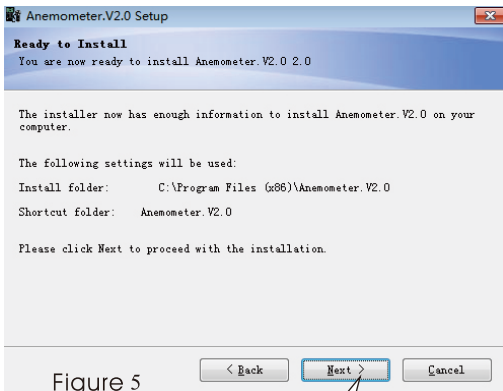


Figure 5

➤ Press “Finish”, the set up would complete

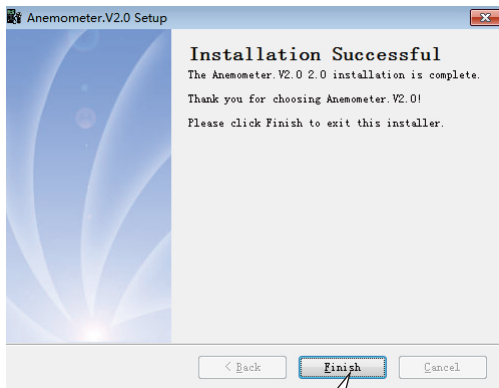
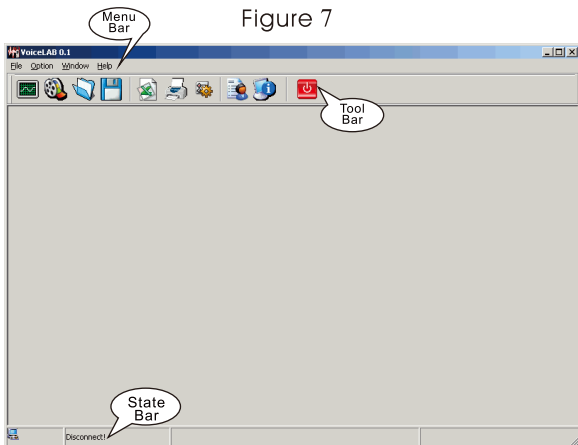


Figure 6

3). Software description

Start the shortcut at the user's computer desktop, (you can also use the "Start--Start menu, the path is: Start\Programs\Smart Sensor\Anemometer\Anemometer), software interface description, as shown in the figure7:



➤ Instructions for each menu, as shown in the figure8:

File menu bar:

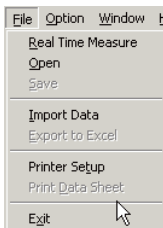


Figure 8

Notice:











Display whether the product is connected to the computer correctly in the status bar:

Connect Ok: Connected successfully

Disconnect: Not connected successfully

Order	Order function
Real Time Measure	Real time data measurement, the measured data will real time be shown on the computer.
Open	Open measurement data file that is saved as the ABIN format
Save	Save real time measurement data
Import Data	Import data stored in the anemometer to computer
Export To Excel	Export the saved data to excel.
Printer Setup	Printer setup
Print Data Sheet	Print data sheet

➤ Tool bar introduction as shown in following figure:

Button	Function
	Real time data measurement, the measured data will real time be shown on the computer.
	Import data stored in the anemometer to computer
	Open measurement data file that is saved as the ABIN format
	Save real time measurement data
	Export the saved data to excel.
	Print the recorded data
	System setup
	Help
	System information
	Close the software

- 4) Insert one end of the USB transmission line into the USB interface on the top of the anemometer host, as shown in the figure9:

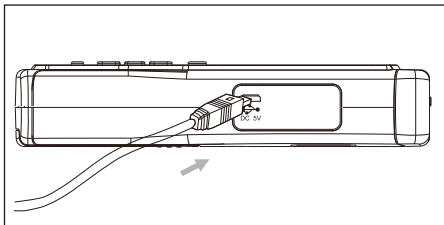


Figure 9

- 5) Insert the other end of the USB transmission cable into the free connection port on the back of the host computer, as shown in the figure10:

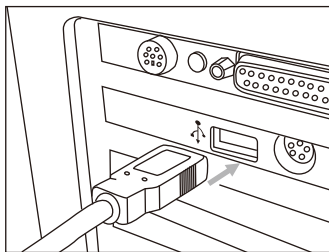


Figure 10

- 6) Real-time online measurement:

Click the "Real Time Measure" under the "File" menu or the "Real Time Measure" key on the toolbar to enter the real-time measurement mode; then click the "Start to Measure" key to start measuring and record data, as shown in the figure11:

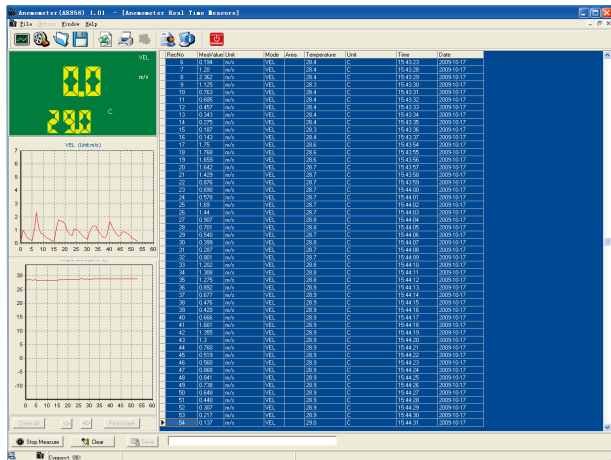


Figure 11

➤ Key description

Button	Function
	Click to start real time measurement
	Click to stop real time measurement
	Click to clear out real time measured data
	Click to store real time measured data, input file name in pop-up window, click to save, then also may click FILE\SAVE. (Saved as ABIN format)
RESET ZOOM	Click which display all wind velocity and temperature wave graphic
	Click it the Wind Velocity and Temperature move left side
	Click it the Wind Velocity and Temperature move right side
Print Graph	Click it can print right wind velocity and temperature wave graphic

- 7) Download of measurement data: Click "Import Data" under the "File" menu or on the toolbarkey to enter the measurement data download interface, click the "Import" key below to import the data stored in the main unit of the instrument into the computer, the interface is as shown in the figure12:

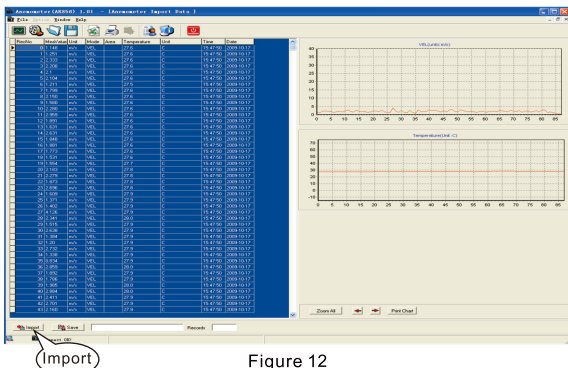






Figure 12

➤ Key Description

BUTTON	Function
	Click to download data from anemometer. In download process, please don't switch over the picture in order to avoid appearing over time mistake "Over Time" .
	Click to save the downloaded data, input file name in pop-up window, click to save then. (Saved as ABIN format)
RESET ZOOM	Click which display all wind velocity and temperature wave graphic
	Click it the Wind Velocity and Temperature move left side
	Click it the Wind Velocity and Temperature move right side
Print Graph	Click it can print right meterage wave graphic

- Through this software, you can also print measurement data, wind speed / air volume curve, and export Excel data files, please refer to the "Help" help file.

Analysis of common problems

The following are the general measures to be taken if the instrument fails to work properly:

1. Blank screen: Check whether the battery is inserted correctly. open the battery door at the bottom of the back of the instrument, and the "+" and "-" symbols of the battery must correspond to the "+" and "-" symbols marked in the battery compartment of the instrument.
2. When the machine cannot be connected to the PC normally, please check whether the USB connection cable is OK. If the connection cable is not working normally, please replace the connection cable.
3. When the machine cannot read the data correctly, please check whether the fan blades are connected
4. When the machine cannot read the temperature data correctly, please check whether the fan blades are connected.
5. When the reading of the machine is inaccurate, please check whether you are operating under the specified temperature and humidity conditions.

Notice:

If the device is not connected to PC, and / or, if there is no operation after starting up, it will automatically shut down after 10 minutes.

Common problems

1: Never clean the probe

Rinse with water after each use to make sure the top fluorescent membrane is clean;

2: If don't use it for a long time:

- 1) Rinse with water to make sure the top fluorescent membrane is clean, let dry in a cool, ventilated place.
- 2) Take out the battery.

Special statement

1: Old batteries must be disposed of in accordance with local laws and regulations.

2: The company reserves the right to update and modify the design specifications and the content of the manual of this product. If there is any change, it will not be notified.

Warranty

1. The meter is warranted to be free from defects in material and workmanship for a period of one year from the date of purchase. This warranty covers normal operation and does not cover battery misuse, abuse, alteration, tampering, neglect, improper maintenance or damage resulting from leaking batteries.

2.2. The above warranty terms are only valid for the main instrument and consumables such as probe accessories are not covered by the warranty.

Dongguan jieyi Technology Co., Ltd.

Address: 221 Jiaojiao Road, Dalingshan Town, Dongguan City,
Guangdong Province

Official website: www.azovtes.com

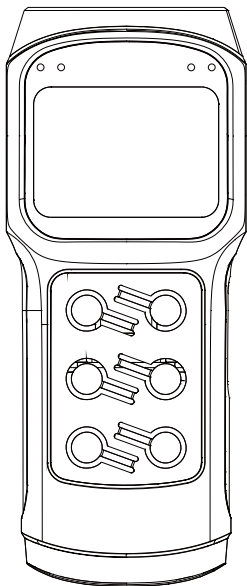
Phone: 0769-82788006

E-mail: azovtes@163.com



皆仪
AZOVTES®

诸事皆仪



东莞市皆仪科技有限公司

地址:广东省东莞市大岭山镇教育路221号

官网:www.azovtes.com

电话:0769-82788006

邮箱:azovtes@163.com

